



Grille lighting kit 6 Chase LED tubes with controllers

Visit [HeiseLED.com](https://www.HeiseLED.com) to view the available installation parts and accessories.

Watch a Complete Installation of this product on: [youtube.com](https://www.youtube.com)



Part Components

- (1) Heise Connect chase controller
- (6) 1ft chase LED tubes
- (2) 5ft extension cables
- (4) 1ft extension cables
- (12) Clamp mounts
- (12) Clamp screws
- (12) 8in cable ties
- (4) 4in cable ties
- (1) Adhesive pad

Product Features

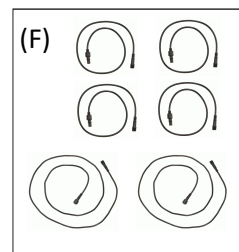
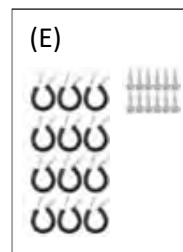
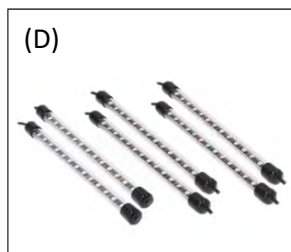
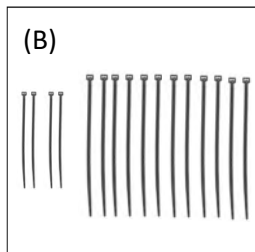
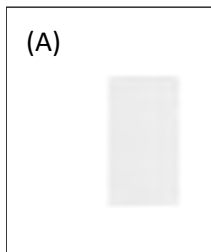
- Enhance your exterior glow with the grille lighting kit. This kit includes 6 chasing LED tubes, along with a Heise Connect Controller and RF remote. Designed to add backlighting to the front grille. This effect can be used by itself or with an underglow kit to really stand out from the crowd. The kit uses two circuits for an extreme effect, which is controlled via the Heise Connect mobile app.

Tools Needed

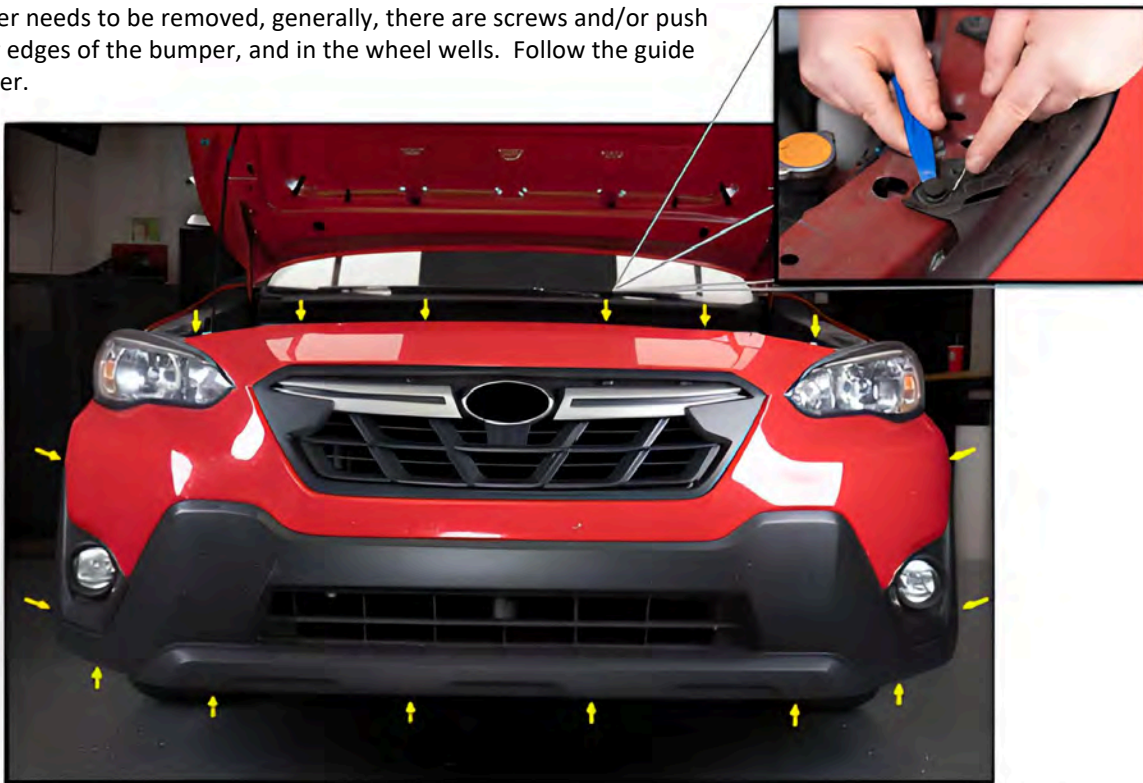
- Wire stripper
- Crimper
- Pry tool
- Screwdriver set
- Socket set
- Impact driver

What's in the box:

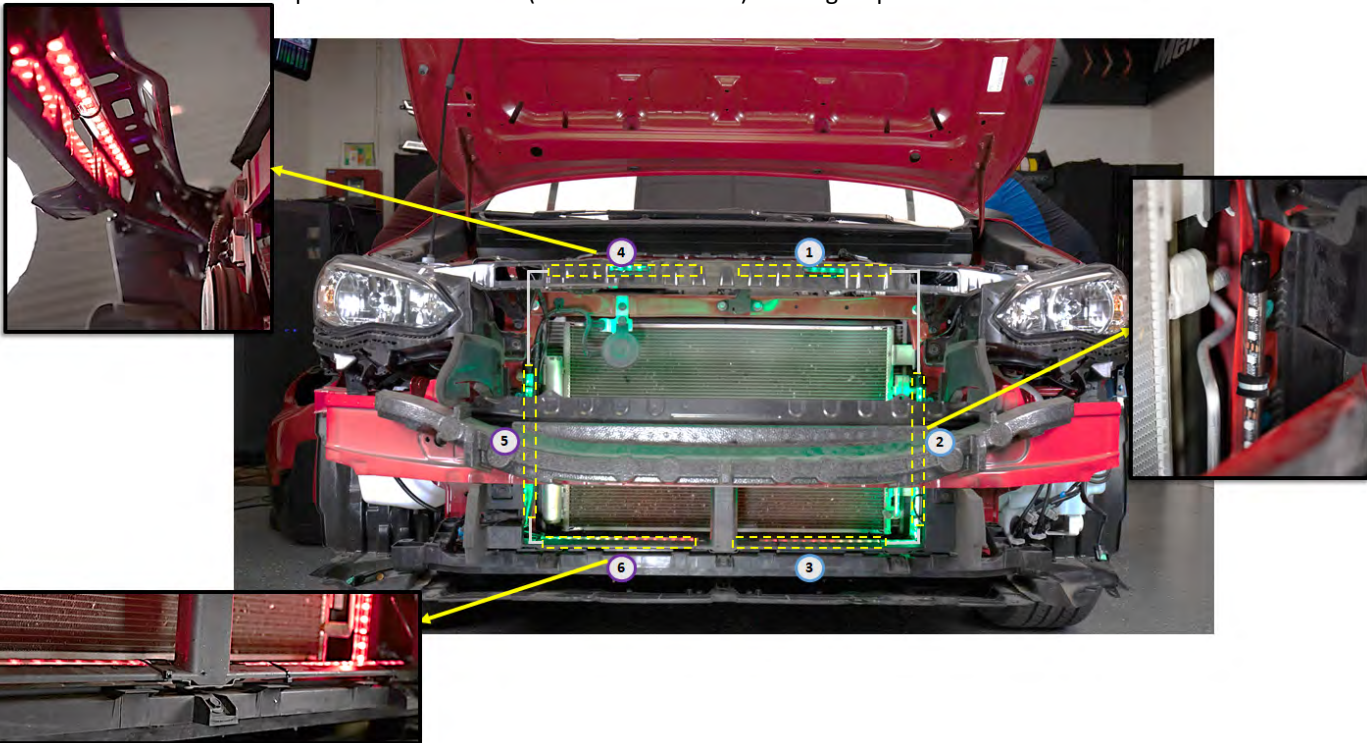
(A) Adhesive pad (B) Cable ties (C) Heise connect controller and remote, (D) LED tubes, (E) Clamps and screws, (F) Extension cables



- Look up the front grille/bumper disassembly for the vehicle. This information can be found in a service manual. Some vehicles allow the grille to be removed independently from the bumper. If the entire bumper needs to be removed, generally, there are screws and/or push pins on the upper and lower edges of the bumper, and in the wheel wells. Follow the guide and remove the grille/bumper.



- Inspect how the bumper/grille aligns with the front end of the vehicle and determine where to mount the tubes so that they do not interfere with the re-installation of the bumper. The (6) tubes are intended to be used in two groups of (3). The first tube should be mounted to bottom side of the upper frame (above the radiator), the second tube vertically to the side frame (to the side of the radiator), and the third tube to the top of the lower frame (below the radiator). Each group will create a half circle around the radiator.



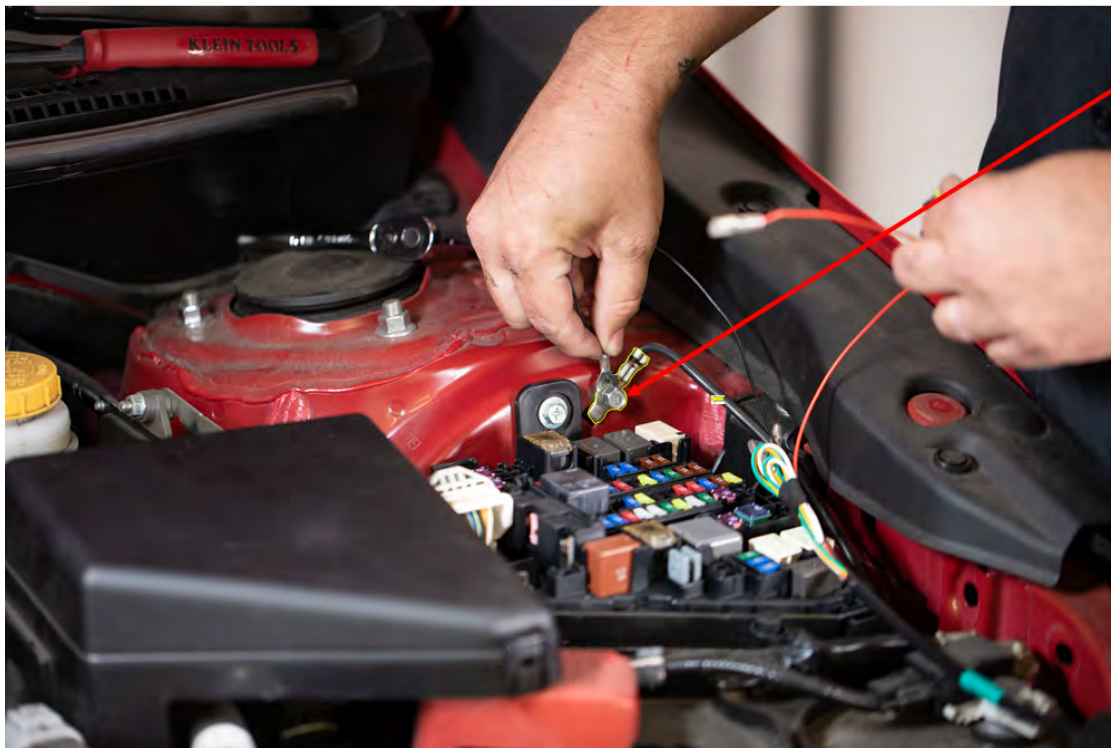
- Once the locations and routing has been determined, position the tubes and mount them with the provided clamps and clamp screws (2 clamps per tube) or 8in cable ties (2 per tube). Make sure to allow for the wires connecting to the tubes, so that they will not be pinched or stressed. The (4) 1ft extension cables are included to connect the tubes together, if the tubes do not reach each other on their own.



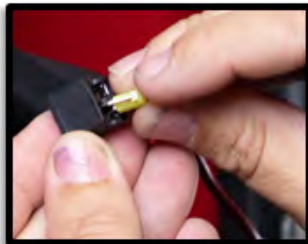
- Find a suitable and safe location to mount the controller. Verify that the chosen location will not interfere with operation of the hood. Usually, the top of the under hood fuse box is a good location. Clean the location with rubbing alcohol and let dry. Then, apply the double sided pad to the rear of the controller and stick in place.



- The larger cable extending from the controller is the power connections. The black wire should be connected to a factory chassis ground point or the negative terminal of the battery. Factory bolts inside the engine bay along the fender wall generally will suffice. A multimeter should be used to check the ground continuity.



- The red wire should be protected with a 10A fuse (not included) and should be connected to a switched power source. We recommend using an add-a-fuse adapter (not included) that matches your vehicle's fuse type, and connecting it to a switched circuit in the under the hood fuse box with a rating of 15A or higher. A service manual can be helpful in identifying an appropriate circuit.



Add-a-fuse part numbers

ATC fuse: ATCDT-1

ATR fuse: ATRDT-1

ATM Mini fuse: ATMDT-1

ATM Low Profile fuse: ATMLPDT-1

❖ **Optional Connections**

To activate the turn signal function, locate the vehicle's +12V turn signal wire for the driver side and for the passenger side. Confirm these wires with a multimeter. Extend the green wire on the controller and connect it to the driver side +12V turn signal wire. Extend the yellow wire on the controller and connect it to the passenger side +12V turn signal wire.

- Locate the output connectors on the controller, and find the arrows marked on the heads. Align the arrow on the extension cable head with the arrow on the output head. To connect press the heads together firmly, then screw the retaining cap clockwise. Connect one of the 5ft extension cables to either of the left outputs, and the other 5ft extension to either of the right outputs.



- Mark the end of the extension cable connected to the controller's left output. Then, route both extension cables from the controller to the grille. Make sure to avoid hot panels and sharp objects. Used the included cable ties to secure the extension cables. Connect the extension cable from the left output to the driver side tube set, and the other extension cable to the passenger tube set.



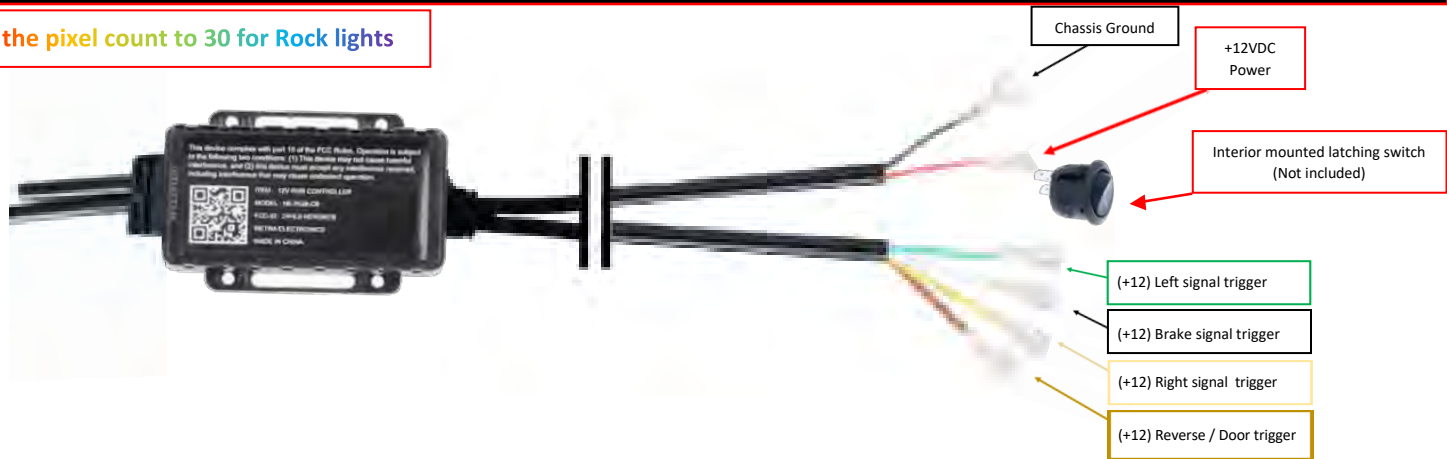
Right extension cable

Left extension cable

- Switch on vehicle, and test functionality. If everything is working correctly, reassemble the bumper/grille, any removed panels, and/or gaskets.



Set the pixel count to 30 for Rock lights





Thank you for purchasing from Metra Electronics! We're excited to see your installs, scan the QR to share on our Instagram. If you have any questions, comments, feedback on the product, please contact our tech support email via techsupport@metra-autosound.com.

Don't forget to Visit HeiseLED.com to view the available installation parts and accessories.

Having difficulties?

Contact our tech support line at:
Techsupport@metra-autosound.com

Or via phone at:
386.257.1187

TECH SUPPORT HOURS (EST)

Monday-Friday: 9:00AM – 7:00PM
Saturday: 10:00AM – 5:00PM
Sunday: 10:00AM – 4:00PM

Closed for most US Federal Holidays



Metra Recommends MECP
certified technicians